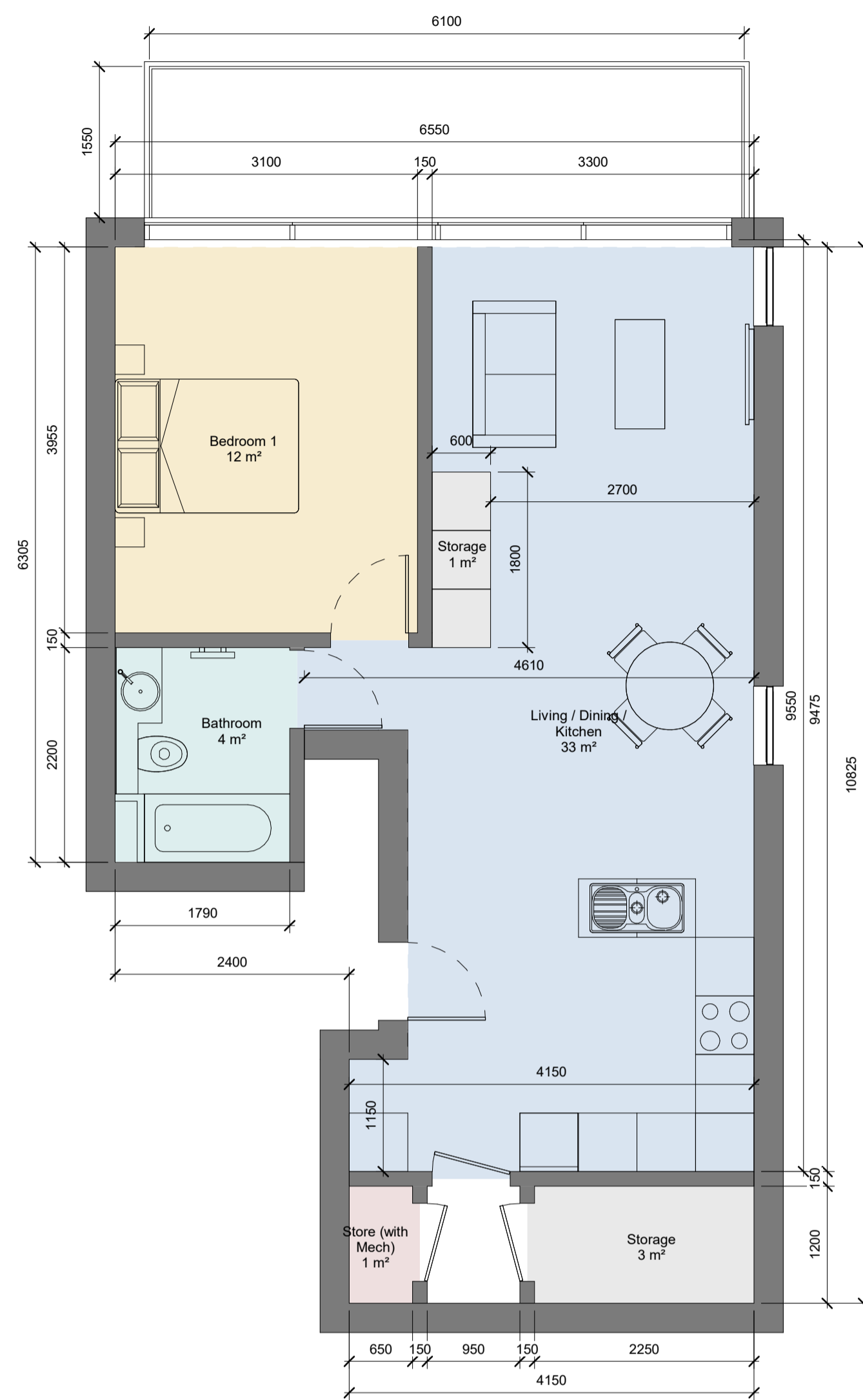


**Room Name Legend**

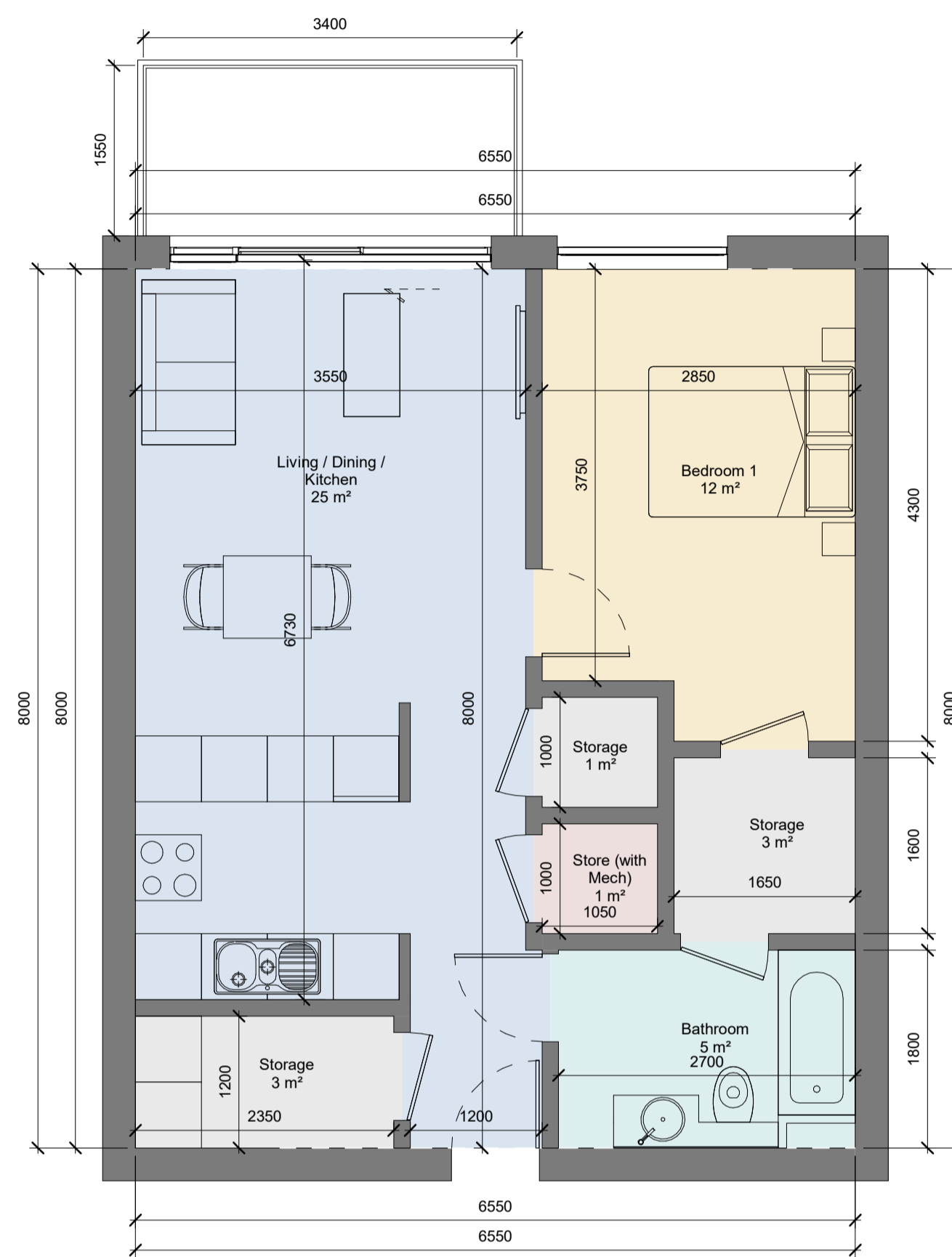
- Bathroom
- Bedroom 1
- Living / Dining / Kitchen
- Storage
- Store (with Mech)



**1 UNIT TYPE 1J**  
1 : 50

ROOM NAME	TARGET WIDTH	ACTUAL WIDTH	TARGET AREA	ACTUAL AREA
LIVING / KITCHEN / DINING	3.3m	3.3m	23m <sup>2</sup>	35m <sup>2</sup>
STORAGE			3m <sup>2</sup>	4m <sup>2</sup>
BEDROOM	2.8m	3.1m	11.4m <sup>2</sup>	12m <sup>2</sup>
BALCONY / AMENITY			5m <sup>2</sup>	5m <sup>2</sup>

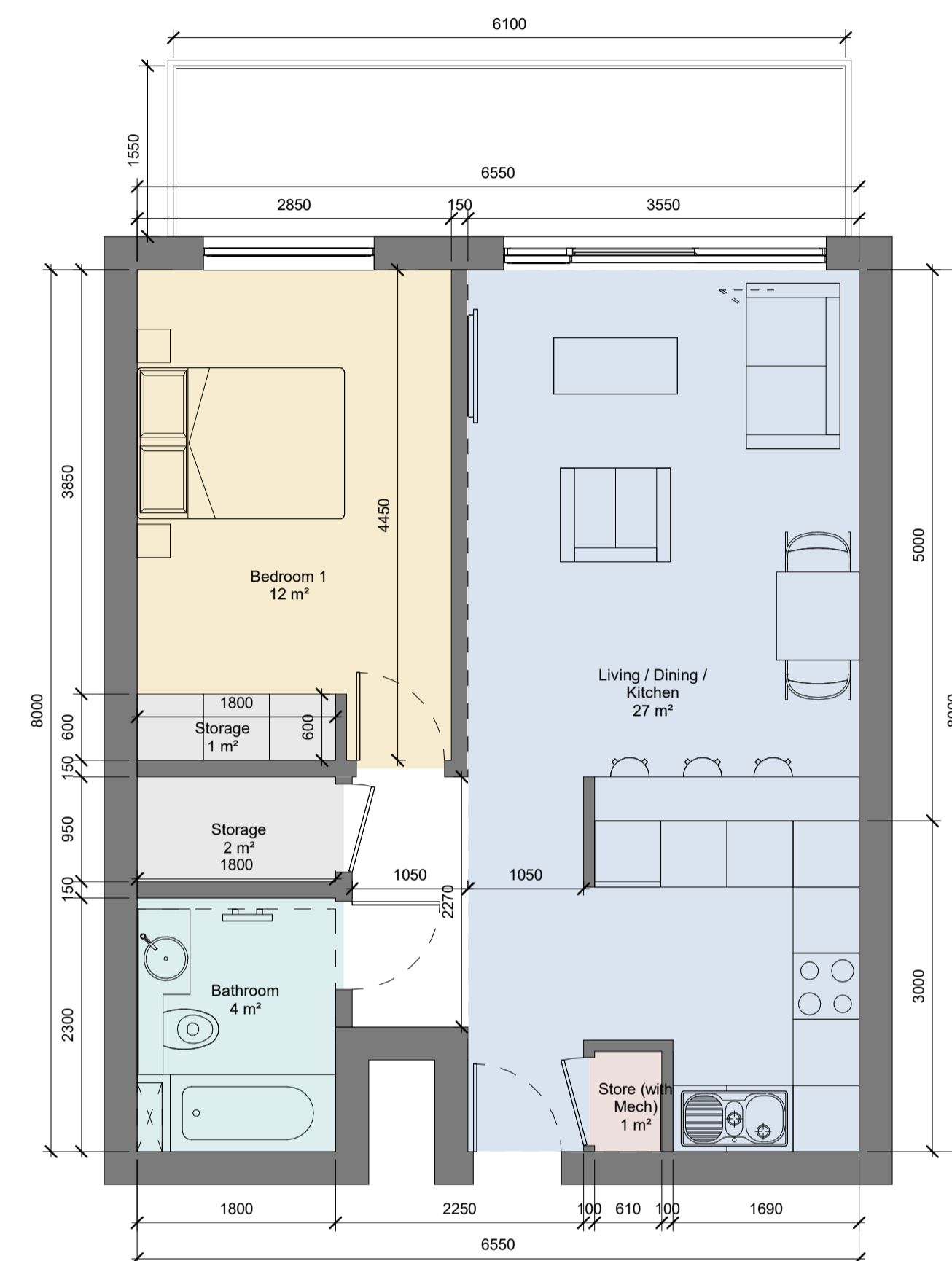
TARGET TOTAL AREA	ACTUAL TOTAL AREA
45m <sup>2</sup>	59m <sup>2</sup>



**2 UNIT TYPE 1K**  
1 : 50

ROOM NAME	TARGET WIDTH	ACTUAL WIDTH	TARGET AREA	ACTUAL AREA
LIVING / KITCHEN / DINING	3.3m	3.55m	23m <sup>2</sup>	25m <sup>2</sup>
STORAGE			3m <sup>2</sup>	6m <sup>2</sup>
BEDROOM	2.8m	2.85m	11.4m <sup>2</sup>	12m <sup>2</sup>
BALCONY / AMENITY			5m <sup>2</sup>	5m <sup>2</sup>

TARGET TOTAL AREA	ACTUAL TOTAL AREA
45m <sup>2</sup>	52m <sup>2</sup>



**3 UNIT TYPE 1L**  
1 : 50

ROOM NAME	TARGET WIDTH	ACTUAL WIDTH	TARGET AREA	ACTUAL AREA
LIVING / KITCHEN / DINING	3.3m	3.55m	23m <sup>2</sup>	27m <sup>2</sup>
STORAGE			3m <sup>2</sup>	3m <sup>2</sup>
BEDROOM	2.8m	2.85m	11.4m <sup>2</sup>	12m <sup>2</sup>
BALCONY / AMENITY			5m <sup>2</sup>	5m <sup>2</sup>

TARGET TOTAL AREA	ACTUAL TOTAL AREA
45m <sup>2</sup>	51m <sup>2</sup>

REV	DATE	DESCRIPTION	CKH	DRN
P1	24/02/2022	ISSUED FOR PLANNING	BR	CS

STATUS CODE	DESCRIPTION
ISSUED FOR PLANNING APPROVAL	

CLIENT  
**Ravensbrook Limited**

PROJECT  
**Ravens Rock Road SHD; IVM House, nos. 31 and 31a Ravens Rock Road, Sandyford Business Park, Dublin 18**

DRAWING  
**PROPOSED UNIT LAYOUT 1J +1K+1L**

PROJECT NUMBER  
950719

DATE  
10/05/2021

SCALE@ A1:  
1 : 50

DRAWN/CHECKED:  
BC/ HJL

STATUS CODE: DRAWING NUMBER REVISION  
A1 RR-HJL-00-ZZ-DR-A-1614 P1

**Henry J Lyons**

Architecture + Interiors  
henrylyons.com

+353 1 888 3333  
info@henrylyons.com

51-54 Pearse Street  
Dublin D02 KA66

THIS DRAWING IS FOR INFORMATION PURPOSES ONLY. MINIMUM WIDTHS, AREAS & AGGREGATE AREAS TAKEN FROM DHP&LC, SUSTAINABLE URBAN HOUSING: DESIGN STANDARDS FOR NEW APARTMENTS, GUIDELINES FOR PLANNING AUTHORITIES (2020).

DIMENSIONS, UNIT DOORS, BALCONIES AND WINDOWS SHOWN ARE INDICATIVE FOR THE TYPICAL APARTMENT TYPE ONLY. REFER TO ACCOMPANYING HOUSING QUALITY ASSESSMENT REPORT & SCHEDULE OF AREAS, AND ARCHITECTURAL DRAWINGS, PROPOSED FLOOR PLANS FOR THE FOLLOWING INFORMATION RELATING TO INDIVIDUAL APARTMENTS: LEVELS, APARTMENT NUMBERING, LOCATION, ORIENTATION, ENTRANCE DOOR POSITION, BALCONIES AND WINDOWS TO SPECIFIC APARTMENTS.