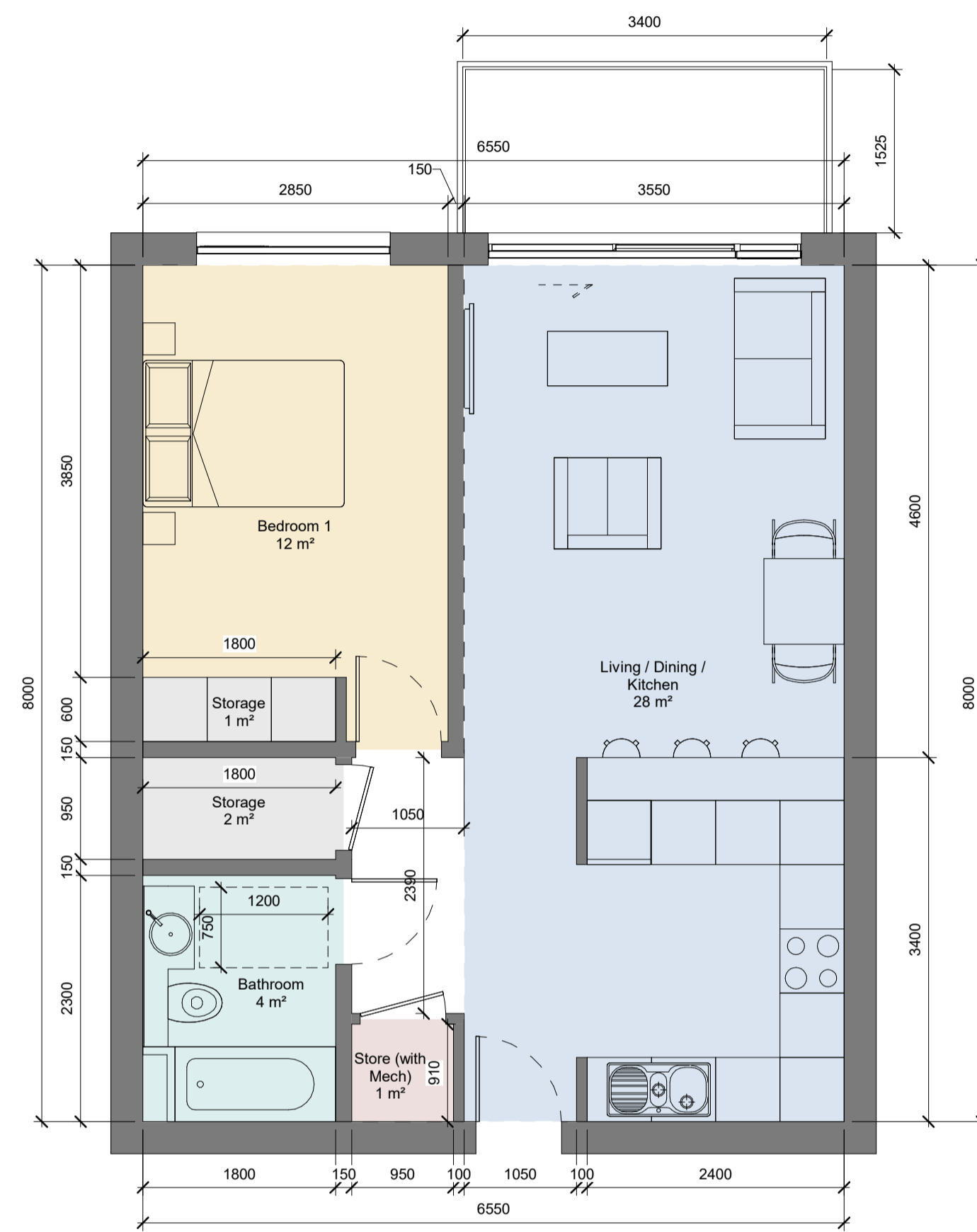
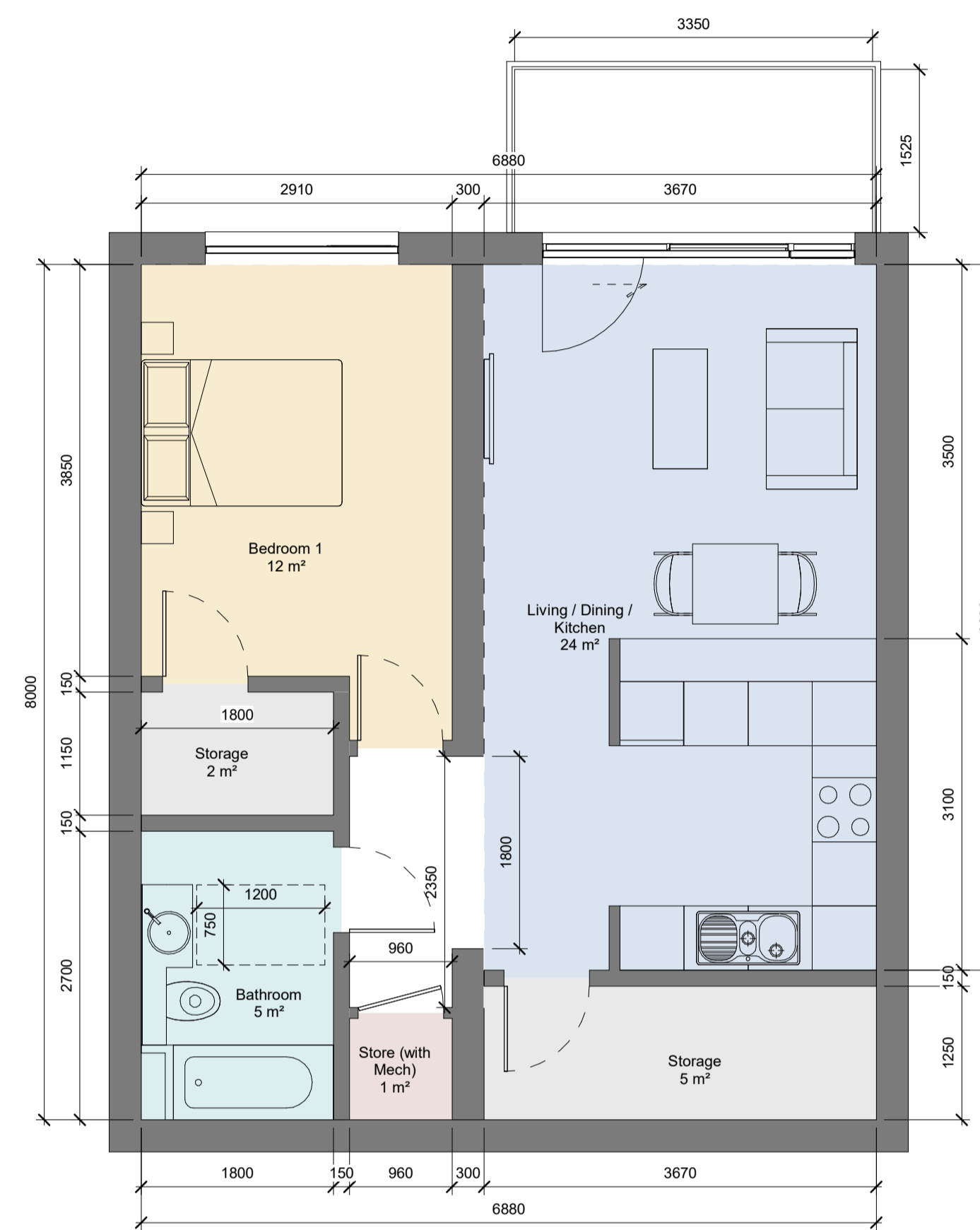


Room Name Legend

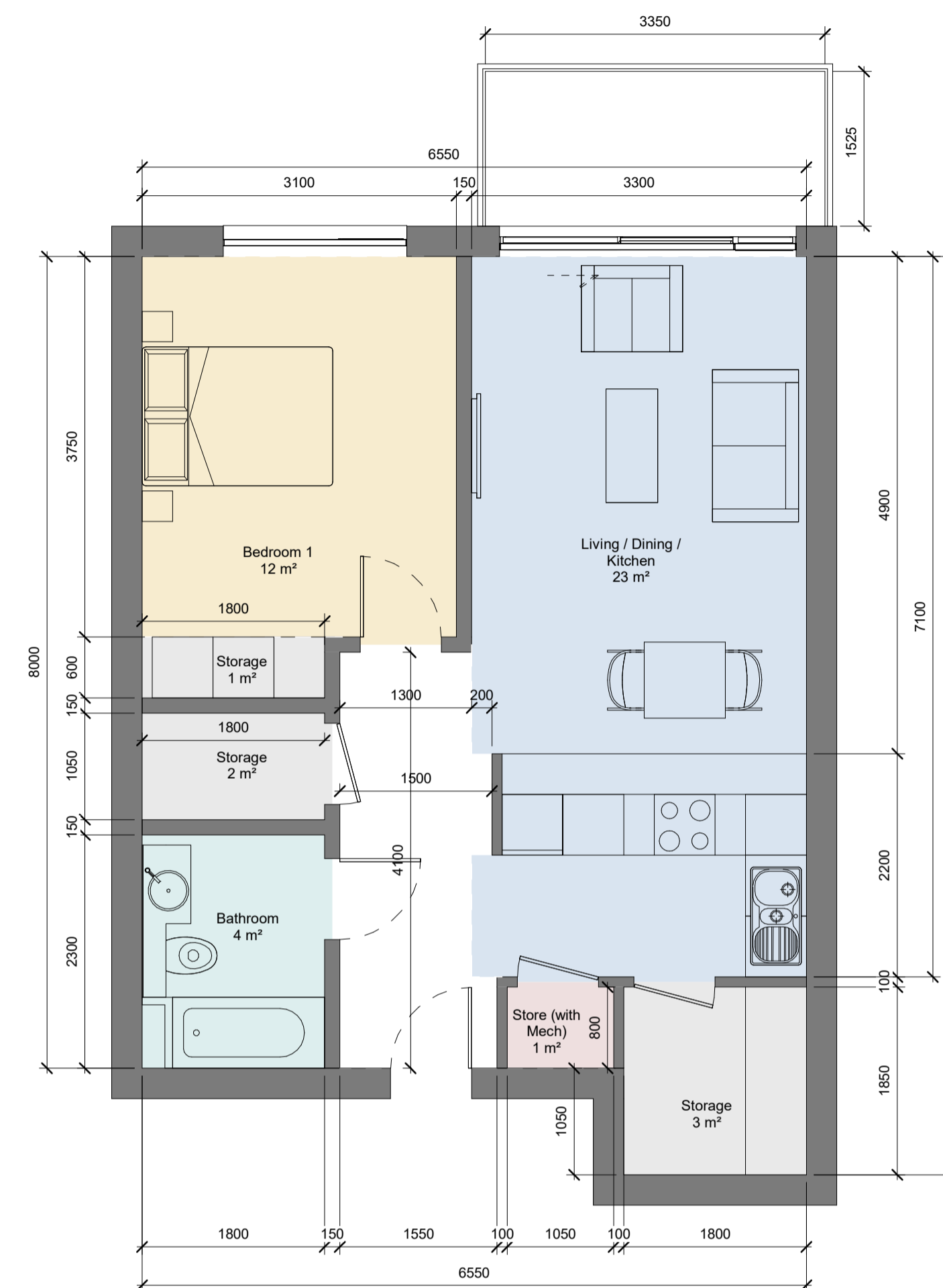
- Bathroom
- Bedroom 1
- Living / Dining / Kitchen
- Storage
- Store (with Mech)



1 UNIT TYPE 1A
1 : 50



2 UNIT TYPE 1B
1 : 50



3 UNIT TYPE 1C
1 : 50

ROOM NAME	TARGET WIDTH	ACTUAL WIDTH	TARGET AREA	ACTUAL AREA
LIVING / KITCHEN / DINING	3.3m	3.35m	23m ²	28m ²
STORAGE			3m ²	3m ²
BEDROOM	2.8m	2.85m	11.4m ²	12m ²
BALCONY / AMENITY			5m ²	5m ²

TARGET TOTAL AREA	ACTUAL TOTAL AREA
45m ²	52m ²

ROOM NAME	TARGET WIDTH	ACTUAL WIDTH	TARGET AREA	ACTUAL AREA
LIVING / KITCHEN / DINING	3.3m	3.67m	23m ²	25
STORAGE			3m ²	5m ²
BEDROOM	2.8m	2.9m	11.4m ²	12m ²
BALCONY / AMENITY			5m ²	5m ²

TARGET TOTAL AREA	ACTUAL TOTAL AREA
45m ²	54m ²

ROOM NAME	TARGET WIDTH	ACTUAL WIDTH	TARGET AREA	ACTUAL AREA
LIVING / KITCHEN / DINING	3.3m	3.3m	23m ²	23m ²
STORAGE			3m ²	6m ²
BEDROOM	2.8m	3.1m	11.4m ²	12m ²
BALCONY / AMENITY			5m ²	5m ²

TARGET TOTAL AREA	ACTUAL TOTAL AREA
45m ²	54m ²

REV	DATE	DESCRIPTION	CKH	DRN
P2	24/02/2022	ISSUED FOR PLANNING	BR	CS
P1	13/05/2021	ISSUED FOR STAGE 2 PREPLANNING	BR	BC

STATUS CODE DESCRIPTION
ISSUED FOR PLANNING APPROVAL

CLIENT
Ravensbrook Limited

PROJECT
Ravens Rock Road SHD; IVM House, nos. 31 and 31a Ravens Rock Road, Sandyford Business Park, Dublin 18

DRAWING
PROPOSED UNIT LAYOUT 1A+1B + 1C

PROJECT NUMBER	DATE
950719	10/05/2021

SCALE@ A1:	DRAWN/CHECKED:
1 : 50	BC/ HJL

STATUS CODE:	DRAWING NUMBER	REVISION
A1	RR-HJL-00-ZZ-DR-A-1611	P2

Henry J Lyons

Architecture + Interiors
henrylyons.com

+353 1 888 3333
info@henrylyons.com

51-54 Pearse Street
Dublin D02 KA66

THIS DRAWING IS FOR INFORMATION PURPOSES ONLY. MINIMUM WIDTHS, AREAS & AGGREGATE AREAS TAKEN FROM DHP&LC, SUSTAINABLE URBAN HOUSING: DESIGN STANDARDS FOR NEW APARTMENTS, GUIDELINES FOR PLANNING AUTHORITIES (2020).

DIMENSIONS, UNIT DOORS, BALCONIES AND WINDOWS SHOWN ARE INDICATIVE FOR THE TYPICAL APARTMENT TYPE ONLY. REFER TO ACCOMPANYING HOUSING QUALITY ASSESSMENT REPORT & SCHEDULE OF AREAS, AND ARCHITECTURAL DRAWINGS, PROPOSED FLOOR PLANS FOR THE FOLLOWING INFORMATION RELATING TO INDIVIDUAL APARTMENTS: LEVELS, APARTMENT NUMBERING, LOCATION, ORIENTATION, ENTRANCE DOOR POSITION, BALCONIES AND WINDOWS TO SPECIFIC APARTMENTS.